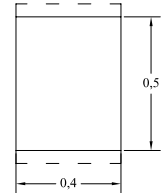
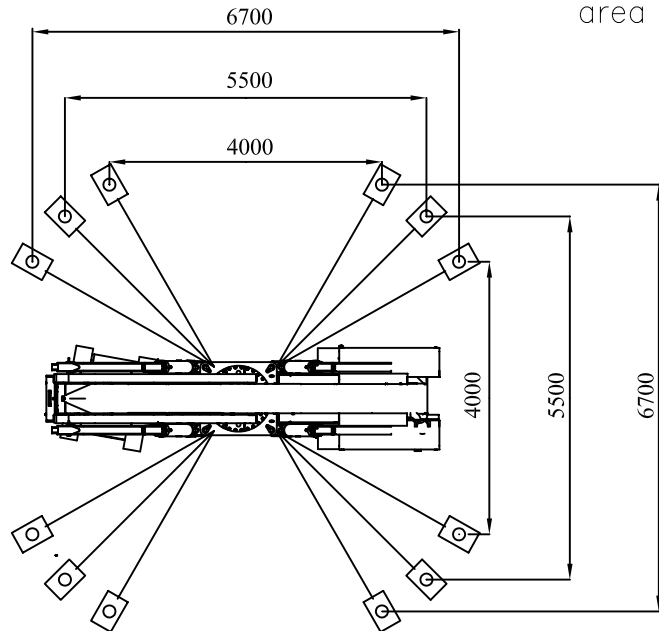
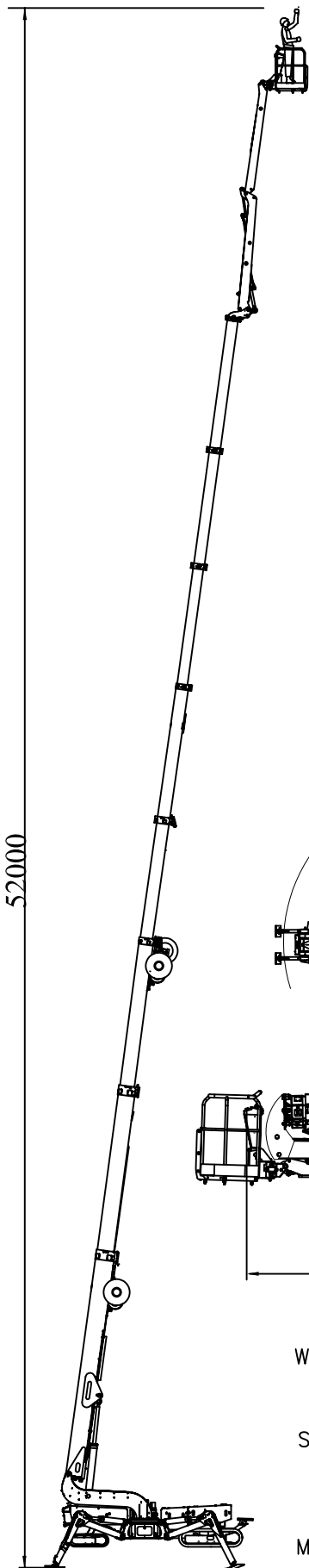
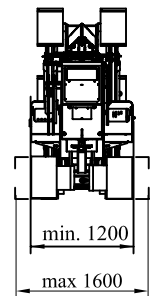
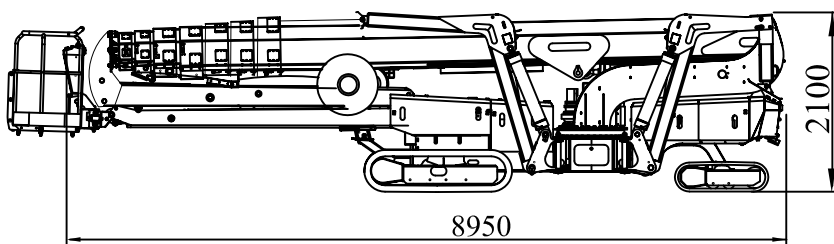
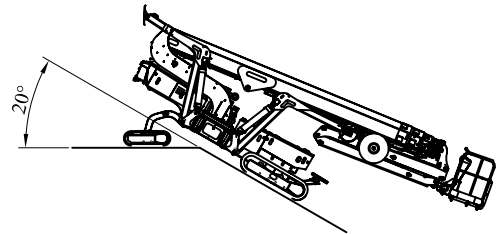
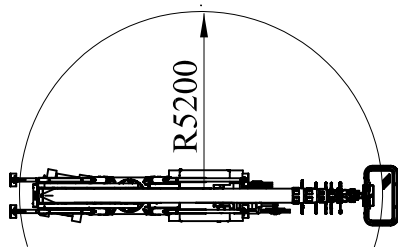


FALCON SPIDER FS 520C

Outrigger plate
area = 2000cm²



Turning radius



Weight standard equipment _____ 13900kg.

Surface pressure under crawlers (soft surface) _____ 0,85kg/cm²

(hard surface) _____ 1,20kg/cm²

Max. surface pressure under 1 outrigger plate _____ 3,20kg/cm²